

FEATURES

- Available as "HR" (high reliability) screened per MIL-PRF-19500, JANTX level. Add "HR" suffix to base part number.
- Available as non-RoHS (Sn/Pb plating), standard, and as RoHS by adding "-PBF" suffix.

MAXIMUM RATINGS

Ratings	Value
Peak Inverse Voltage: UES1304 UES1305 UES1306	200V 300V 400V
Maximum Average D.C. Output Current: I_O @ $T_A = 25^\circ\text{C}$ (Free Air) @ $T_L = 50^\circ\text{C}$, $L = \frac{3}{8}"$	3A 5A
Surge Current @ 8.3ms:	70A
Thermal Resistance @ $L = \frac{3}{8}"$:	20°C/W
Operating and Storage Temperature Range:	-55°C to +150°C

ELECTRICAL CHARACTERISTICS

Part number	PIV	Maximum forward voltage		Maximum reverse current		Maximum reverse recovery time
		$T_J = 25^\circ\text{C}$	$T_J = 100^\circ\text{C}$	$T_J = 25^\circ\text{C}$	$T_J = 100^\circ\text{C}$	
UES1304	200V	1.25V @ 3A $t_p = 300\mu\text{S}$	1.15V @ 3A $t_p = 300\mu\text{S}$	20 μA	500 μA	50ns
UES1305	300V					
UES1306	400V					

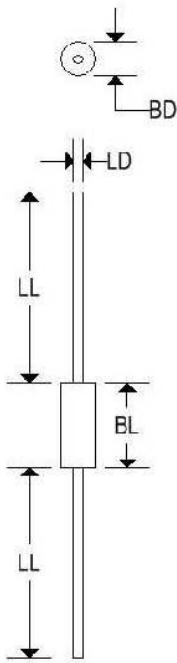
*Measured in circuit $I_F = \frac{1}{2}\text{A}$, $I_R = 1.0\text{A}$, $I_{REC} = \frac{1}{4}\text{A}$

UES1304-UES1306

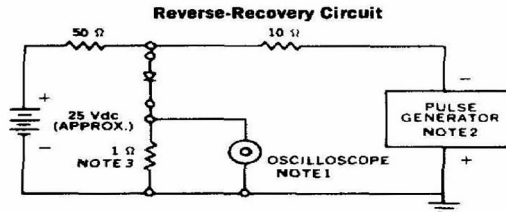
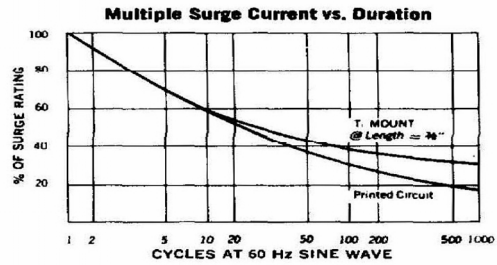
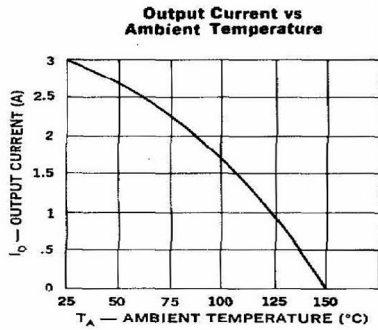
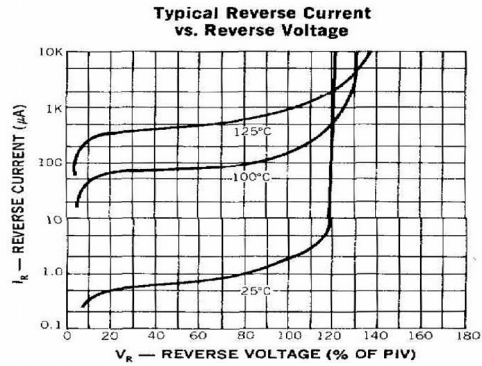
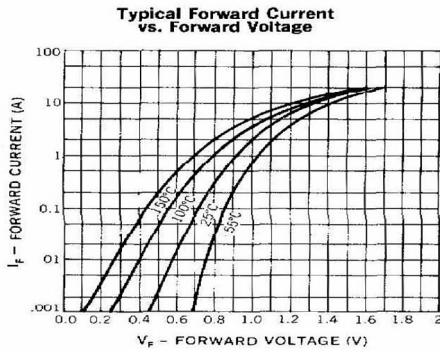
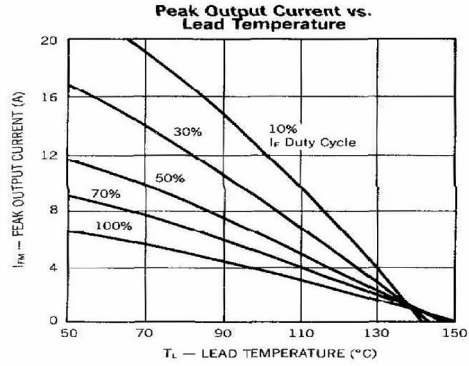
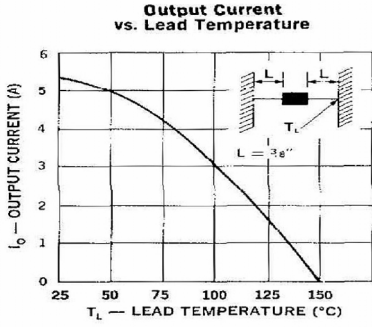
3.5A HIGH EFFICIENCY RECTIFIERS

MECHANICAL CHARACTERISTICS

Case:	Digi B
Marking:	Alpha-Numeric
Polarity:	Cathode Band



	DIGI B			
	Inches		Millimeters	
	Min	Max	Min	Max
BD	-	0.145	-	3.680
BL	-	0.300	-	7.620
LD	0.037	0.043	0.940	1.092
LL	0.975	-	24.800	-



- NOTES:**
- Oscilloscope: Rise time ≤ 3 ns; Input impedance = 50Ω.
 - Pulse Generator: Rise time ≤ 8 ns; source impedance 10Ω.
 - Current viewing resistor, non-inductive, coaxial recommended.